



Commodity Research Programs for the 21st Century

Ted Batkin

President

Citrus Research Board



Background

- Commodity Boards are facing a change in the structure for research within the Land Grant system.
- Campus Based Ag Experiment Station researchers are being forced to more basic or new discovery research.
- Applied research is being given lower priority for AES and CE Specialists



Commodity Research Needs

- There will always be a need for new discovery research.
- There need to be clearly defined pathways for the movement of information from new discovery to final field application at eh grower level.
- Commodity organizations will need to provide the resources for the pathways.



Current Research Paradigm:

- AES scientists develop new technology at the very basic level.
- Field testing is conducted at a very rudimentary level to prove the theories.
- There is often a gap from the lab to the field.

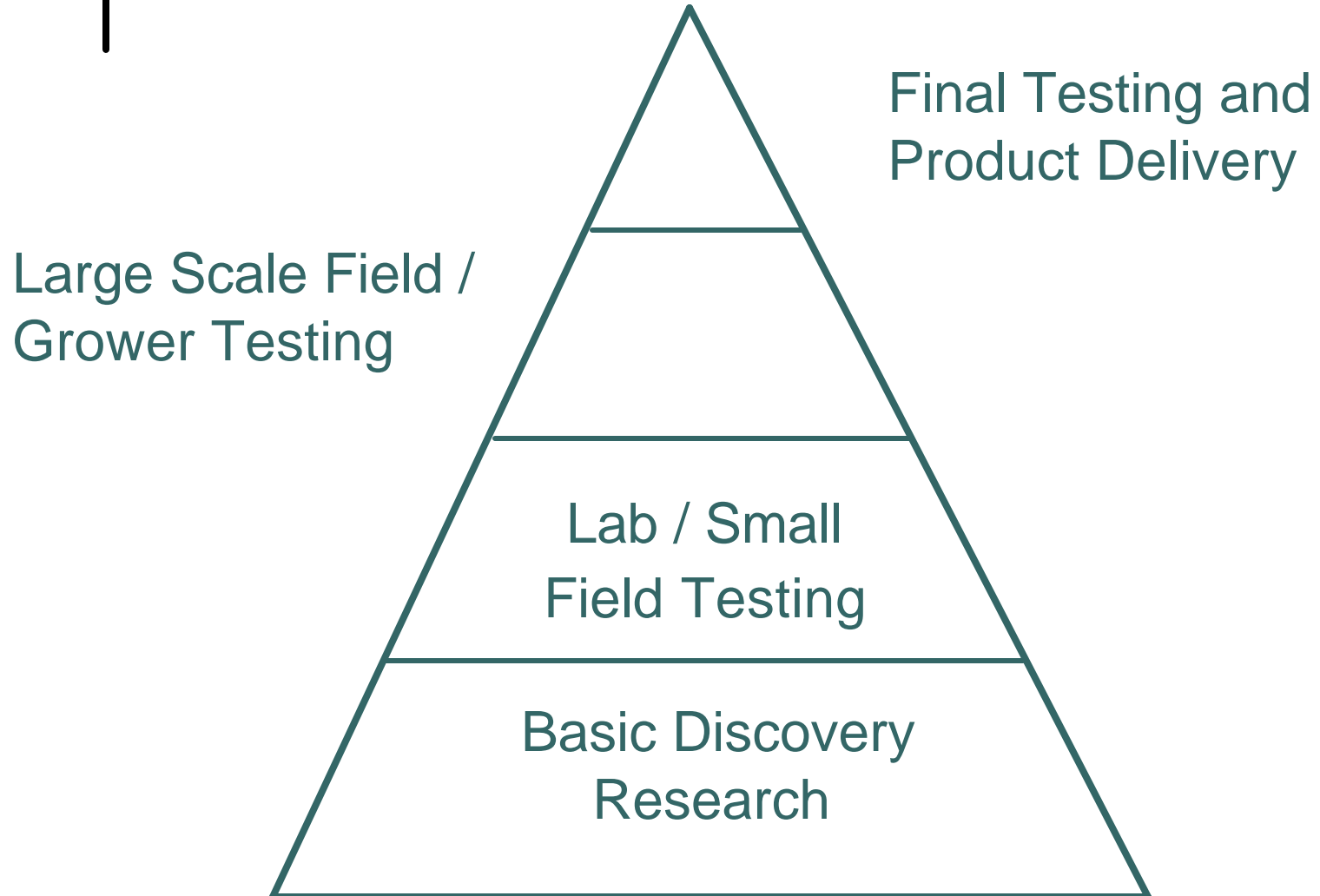


The Problem:

- As more AES personnel retire, the level of research becomes more basic.
- CE Specialists are not being replaced with applied research trained scientists.
- The defined output from most research is a published paper.
- A specific effort must be established to move information from the publication stage to the field.



New Research Paradigm





The Challenge

- Research projects must be analyzed for their deliverable output. What will be the actual product?



Examples:

- New varieties developed through plant transformation: How will they move through the research process to commercialization.
- Function of genes and proteins to be moved into field application programs in order to deliver a functional product to the public.



The Challenge

- Research projects must be analyzed for their deliverable output. What will be the actual product?
- A clear pathway must be developed for all research grants to move the technology from the lab to the grower.

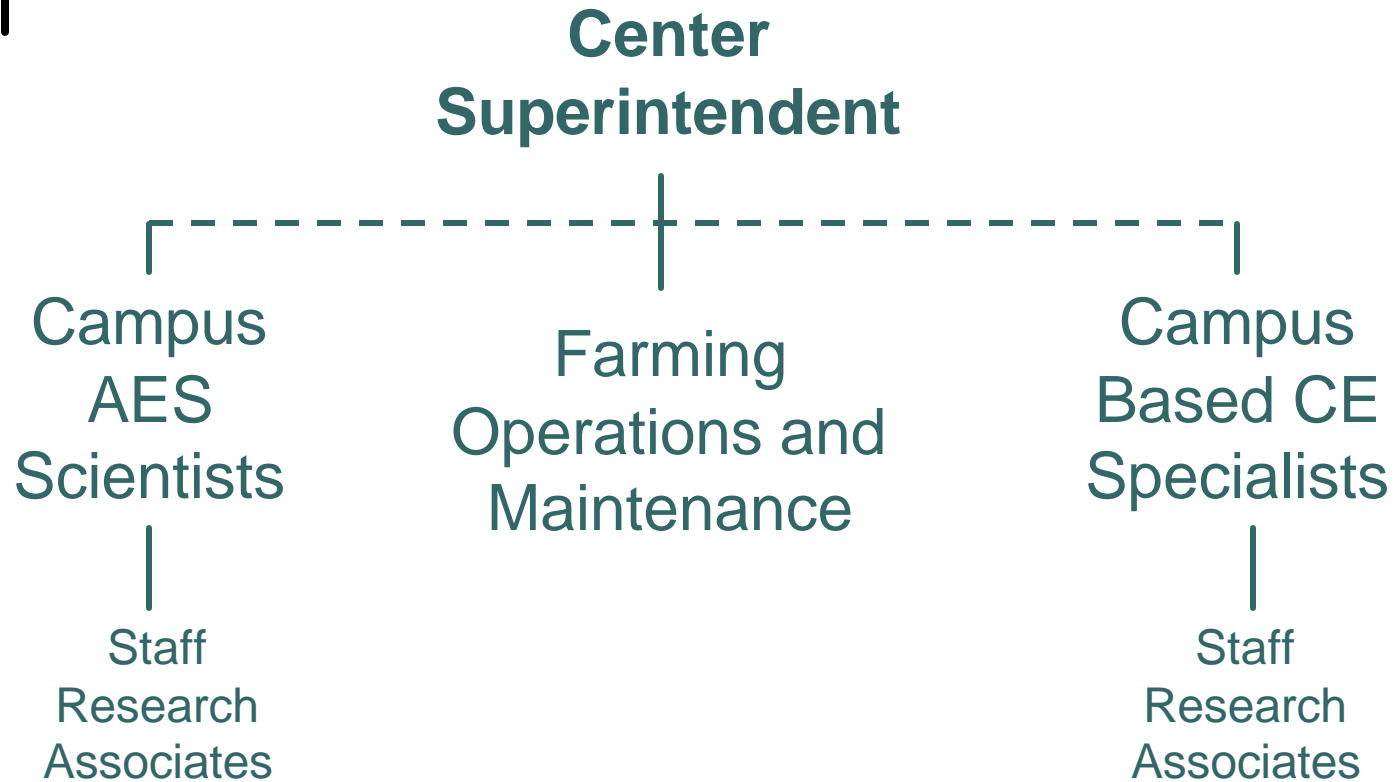


Example:

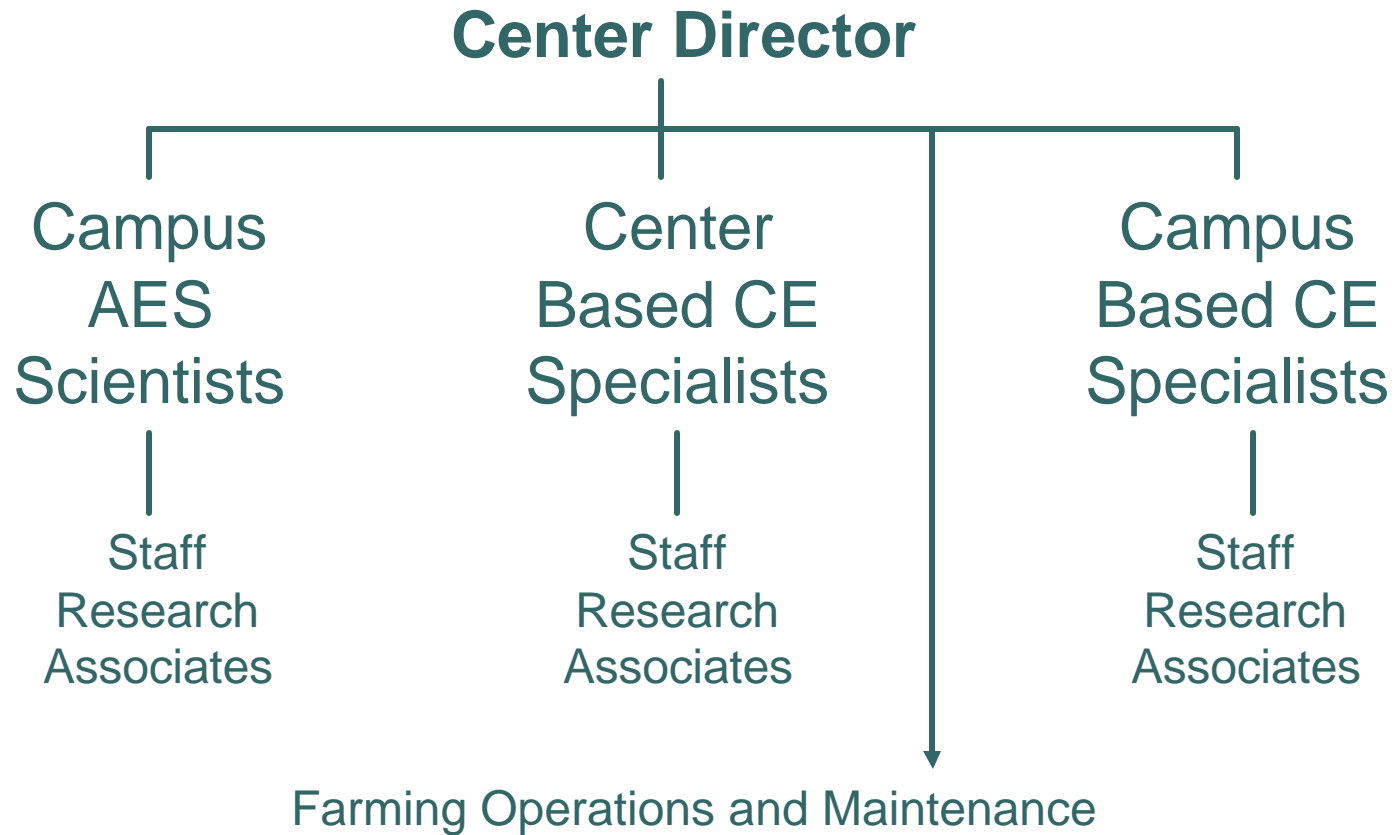
- Industry needs to work with the University to provide funding for CE Specialists that will work on targeted programs.



Lindcove Model - Current



Lindcove Model - Proposed





Conclusion

- The industry must be prepared to provide the resources for the complete pathway development and execution of all research programs.